

ADDING BLC RESOURCES TO MOODLE

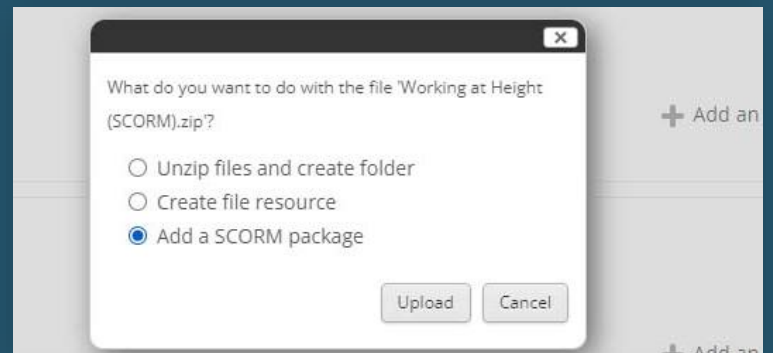
Adding a BLC SCORM resource to Moodle:

BLC resources published as **SCORM** versions are available. These are HTML5 format and have tracking capability for use within Moodle.

1. Drag the **SCORM** zip file directly into your Moodle course



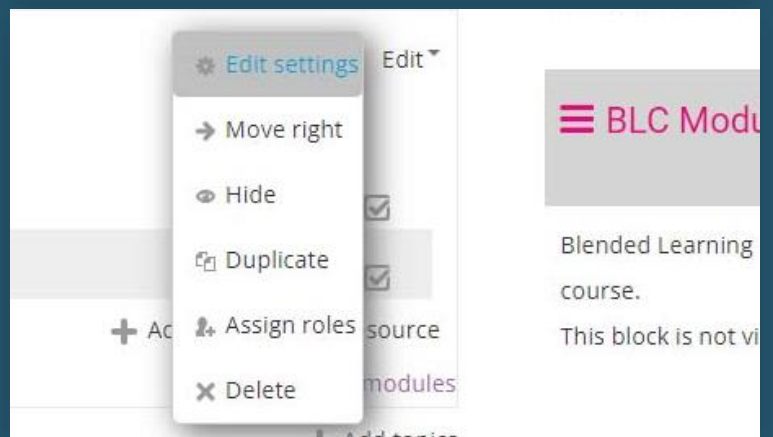
2. Select 'Add a SCORM package' from the available options



3. Rename as required



4. Edit settings as required



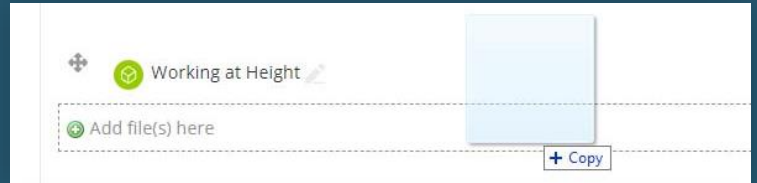
This link explains additional settings to consider when adding a SCORM package:

<https://elearningindustry.com/scorm-package-embedded-into-moodle>

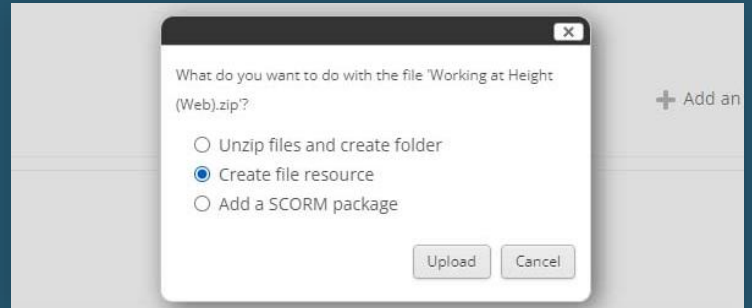
Adding a BLC web ready resource to Moodle:

BLC resources published as **web ready** versions are available. These are HTML5 format and function in the same way as SCORM packages but without any tracking capability.

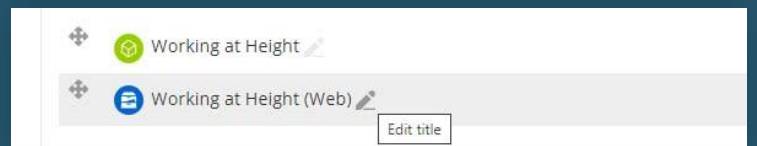
1. Drag the **web ready** version zip file directly into your Moodle course



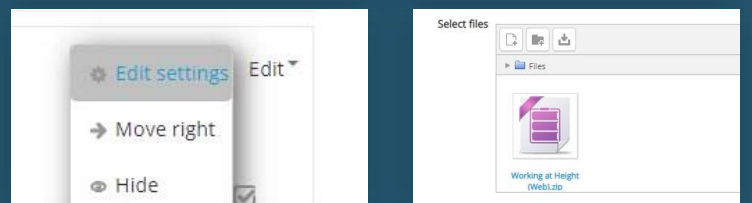
2. Select **'Create file resource'** from the available options



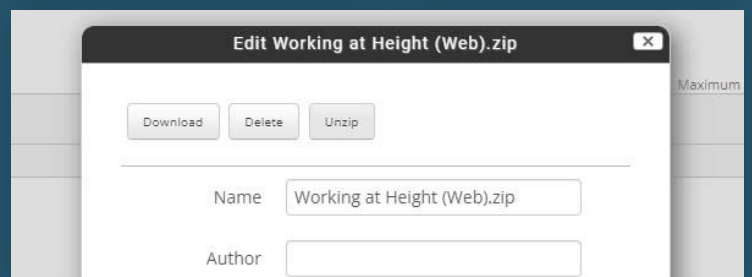
3. Rename as required



4. Edit settings and click on the file icon in the select files area



5. Select **'Unzip'** to open the contents



6. Look for the file **story.html** or **index.html** and select it



7. Choose **'Set main file'** to tell Moodle to use this file as it's launch file.

