

Observation Live

For Lesson Observations

Manage, Create, and Report on your College's Lesson Observations...

System Live have partnered with Wakefield College to produce a cutting edge Lesson Observation system to meet the needs of the Further Education sector. It allows observers to create Lesson Observations and caters for all different types of observations.



SYSTEM
LIVE

01253 462 352
INFO@SYSTEM-LIVE.COM

FOR ALL YOUR
SOFTWARE
NEEDS

Key Features

- Observers can add and record lesson observations.
- Teachers can view observations once they are made available.
- Actions for teachers can be set up on the back of an observation and progress monitored.
- Observations can be tailored to your Provider's observation process. Caters for all types of Observations from formal Graded or Ungraded Observations to more casual Learning Walks.
- Integrates with Planning Live our Scheme of Work and Lesson Planning solution. Observers can view and link Scheme of Work and Lesson Plans associated with the course.
- Fully web based and compatible on all devices from PC to tablet to phone.
- Can pull a myriad of data into the system including courses, groups, timetables, students etc.
- Links with Office 365 Calendar to check availability and add events.
- Offline Observation Mode.

The screenshot displays the 'Observation Live' software interface. The top navigation bar includes 'Observation Live', '17/16', 'SoW', 'Lesson Plan', 'Observation', 'Search', 'Reporting', 'Help', and 'About'. The user is logged in as 'Hello John!'. The main content area is titled 'Home > Observation Selection > Observation' and shows details for 'Course: AS Biology, Group: BIO01-A'. The interface is divided into several sections:

- Actions:** A list of actions such as 'Print Observation', 'Email Observation', 'Add/Sync Office 365', 'Edit Visibility', 'Show Observation Evidence', 'Schedule Another Observation', 'Delete Observation', 'Export Offline Template', and 'Import Offline Template'.
- My Observations:** A list of dates with the selected date 'Mon 02/10 09:00' highlighted.
- Course Information:** Fields for Course (AS Biology), Group (A), Unit (Biological molecules), Qualification Aim Code (60146242), Qualification Aim Title (GCE AS Level in Biology), NVQ Level (3), Qualification Type (A Level), Awarding Body Code (AQA), Awarding Body Name (AQA), and SSA1 Code (02).
- Dates:** Date (02/10/2017), Start Time (09:00), End Time (12:00), Duration (3 Hrs 00 Mins), and Completed (checked).
- Observers (2 Records):** A table listing John Hall (Primary) and Walter Diaz (Shadow).
- Teachers (1 Records):** Felicity Jones.
- Other Staff (1 Records):** Joe Wright.
- Rooms (1 Records):** Photo A10.
- Resources (1 Records):** (Empty record).
- Students (3 Records):** A table with columns for Student, Att, and Punct.

Student	Att	Punct
ILP ALS Mark Edwards	0	0
ILP ALS Stephen Jackson	0	0
ILP ALS Angela Miller	0	0
- Observation Grade:** Observation Grade (Requires Improvement), Observation Grade (Numerical) (3).
- More Information:** Observation Type (Graded), Department (Sciences), Students on Register (3), Students Present (3).

Recording Observations

- Core details about the observation can be recorded including date, start and end times, course, group, unit, tutorial, observer, teacher, resources, students, type of observation, overall observation grade.
- The lesson context can be recorded e.g. topic of lesson.
- The written details of the observation can be recorded.
- The outcome of the observation can be recorded e.g. was further action required.
- The observer can see the observation within its broader context. For example they can view a group profile of the students in the lesson, view key statistics about the course, group or teacher being observed and quickly see observations related to the current observation.
- The observer can create actions for themselves or the teacher off the back of the observation e.g. improvement plan for the teacher.

Course: AS Level Chemistry (HC), Group: A

Detail Group Profile SoW/Lesson Plans Lesson Context Obs. Section A Obs. Section B Action Outcome Related Observations Statistics

📄

<p>Planning Strength</p> <div style="border: 1px solid #ccc; height: 100px;"></div>	<p>Planning Area for Improvement</p> <div style="border: 1px solid #ccc; height: 100px;"></div>	<p>Planning Grade</p> <div style="border: 1px solid #ccc; padding: 5px;">2</div>
---	---	--

Other Observation Features

Course: AS Biology, Group: BIO01-A

Detail | Group Profile | SoW/Lesson Plans | Lesson Context | Obs. Section A | Obs. Section B | Action | Outcome | Related Observations | Statistics

Observations Related to the Teachers

Observations (6 Records)

Type	Course/Tutorial	Date	Start Time	End Time	Observers	Teachers
Graded	AS Biology	21/05/2018	10:00:00	12:00:00	Walter Diaz	Felicity Jones
Learning Walk	AS Biology	08/06/2018	10:00:00	13:00:00	John Hall	Felicity Jones
Learning Walk	Art & Design Level 3 Extended Diploma	10/07/2018	12:00:00	15:00:00	John Hall	Felicity Jones
Graded	AS Biology	10/10/2018	08:45:00	09:55:00	John Hall	Felicity Jones
Graded	AS Biology	01/05/2018	12:00:00	15:30:00	Walter Diaz	Felicity Jones, Jerry W...
Graded	AS Chemistry	17/04/2018	10:00:00	12:00:00	Walter Diaz	Felicity Jones

Observations Related to the Course

Observations (5 Records)

Type	Group Code	Date	Start Time	End Time	Observers	Teachers	Grade	Relation
Graded	BIO01-A	21/05/2018	10:00:00	12:00:00	Walter Diaz	Felicity Jones		

Observation Evidence

- Content Knowledge and Relevance
 - Defined Unfamiliar Terms
 - Emphasis
 - Explained Major Points
 - Good Examples
 - Integrates Materials
 - Showed Steps
 - Varied Explanations
 - Write Key Terms
- Interaction
 - Asked Questions
 - Encourage Questions
 - Listened to Questions
 - Respect for Diversity
 - Responded Appropriately
 - Restated Questions
 - Sufficient Time to Answer
- Organisation
 - Appropriate Level
 - Appropriate Material
 - Command of Subject Matter
- Presentation
 - Lesson Overview
 - Logical Sequence
 - Pace
 - Related Lesson
 - Summarise

- Observations can be linked to a specific Scheme of Work or Lesson Plan in Planning Live. The Lesson Context from the Lesson Plan can be pulled into the Observation.
- Observation Evidence checklists can be populated against the observation and evidence can be directly dragged into text boxes to rapidly fill in observations.
- Observations can be printed and the user can decide which sections to print.
- The observer can decide when to make the observation available for the teacher and the head of department.
- A new observation can be scheduled off the back of an observation.
- Observations are often done outside of the classroom where there is no internet connection particularly for Worked Based Learning or community based Observations. Therefore Observation Live allows Observations to be created offline and then later synced with the system when internet is available.

Adding New Observations

- New observations can be added.
- Observations can be added by date, course, group, staff or observer.
- Observation Live links with timetables so when adding new observations the date, start time, teacher and room can be automatically populated.
- Observation Live links with Office 365 so new observations can be directly added to the observer's calendar and users can quickly see if the observer is free at a particular date and time.
- Different types of observations can be added e.g. graded observation or learning walks.

Add New Observation

Office 365 Course/Tutorial Find Lesson **Observation Detail** Checks Finish

Optionally please select the Lesson the Observation is for from the timetabled lessons by clicking the appropriate record.

The Busy column shows whether the observer is potentially busy at the timetabled lesson. The system will check Office 365 as appropriate for calendar entries and also Observation Live for conflicting observations. Hovering over the check box will display more information about the potential conflict.

Timetable Lessons (4 Records)

✕ ▾

Filter... Type Filter... Type Filter... Type Filter... Type Filter... Type Filter...

John Hall Busy?	Date	Start	End	Course Code	Course Name
<input type="checkbox"/>	15/07/2018	10:00:00	13:00:00	BIO01	AS Biology
<input type="checkbox"/>	16/07/2018	14:00:00	16:00:00	BIO01	AS Biology
<input checked="" type="checkbox"/>	17/07/2018	09:30:00	11:45:00	GEO01	Geology A Level
<input type="checkbox"/>	18/07/2018	13:35:00	16:20:00	GEO01	Geology A Level

⏪ Cancel ⏩

Planning Observations

- Observation Live contains an Observation Planner which allows observations to be added based on statistical information.
- The planner is split out by courses, groups, teachers and observers..
- For example the user can search for all staff with no observations or courses which have a low average observation score. The possibilities are endless.
- Custom statistical information can be imported against courses, groups and staff to plan observations. For example the college could import course pass rates or the overall attendance of each staff's learners to help plan observations.

Observation Planner

Courses Groups Teachers Observers

Teacher Observation Planner (20 Records)

Staff Code	Staff Name	Department	Last Obs	Next Obs	Last Graded Obs	Next Graded Obs	No. Obs ↓	No. Graded Obs
FJones	Felicity Jones	Sciences	30/09/2017	10/07/2018	30/09/2017		2	1

Observations (2 Records)

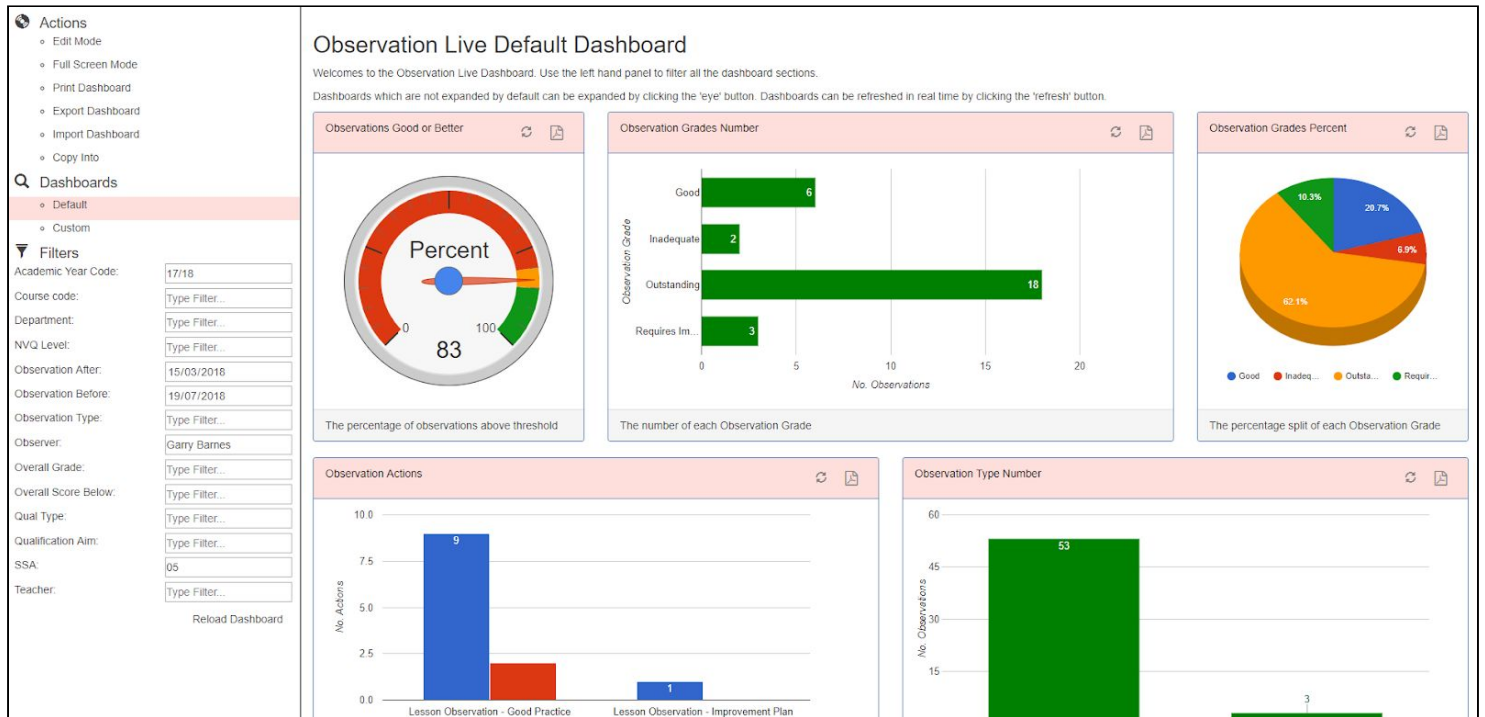
Type	Course/Tutorial	Date	Start Time	End Time	Observers	Teachers	Grade	Complete
Graded	AS Chemistry	30/09/2017	09:00:00	12:00:00	John Hall	Felicity Jones	Requires Improvement	<input type="checkbox"/>
Learning Walk	Art & Design Level 3 Extended Diploma	10/07/2018	12:00:00	15:00:00	John Hall	Felicity Jones	Requires Improvement	<input type="checkbox"/>

Templates

- Templates govern the look and feel of the observation. Observation templates are fully configurable by the college to mimic their observation process.
- Colleges can have one or more template.
- Templates allow observation labels and tabs to be renamed and turned on or off, guide text added, configurable dropdowns set up, permissions set as to who can view and edit different inputs.
- This can allow observations to be set up from in depth graded observations to cut down learning walks.
- Observations templates can be set up as graded or non graded. Grading schemes can be defined e.g. 1-4, outstanding to requiring improvement or blue to red etc. For graded observations the grade can be automated based on what the user has filled out within the observation.

- The template governs how the Observation is made available to the teacher and head of department. For example the observation can be always visible or manually made available by the observer.
- The template can be associated with a checklist of configurable observation evidence.

Dashboards



- The dashboard allows detailed analysis of the observations within the system.
- Various reports are available e.g. percentage of grades below thresholds, observations by department, number of different actions.
- The dashboards can be filtered in many ways e.g. for a specific department, course, teacher, observer, nvq level, qual type etc.
- The system ships with a default dashboard but due to the configurable nature of the system we are able to customise a dashboard tailored to your requirements.

Other Features

- Observation Live is a web based platform allowing ease of deployment and the ability to access the system anywhere. The system has been created from the ground up to create an outstanding user experience. The system works fully on PCs, Macs, Tablets and Phone formats. The system reconfigures itself to look different on different devices in line with modern web technology. The system uses cutting edge web technologies to minimise loading and allow for a seamless user experience.
- Colleges with ProMonitor or ProSolution can set up the system very quickly. The system has the ability to import a variety of data from ProMonitor and ProSolution including students, enrolments, courses, staff, units, teachers etc. These imports can be configured to automatically import nightly which means that all the data is up to date and the college does not have to undertake any complex data management. For colleges that do not use these systems, links can still be created with other systems and scheduled to be imported.
- Users can be setup to access the system with a username and password or using single sign on so the system will automatically log them in.
- Permission Groups can be set up allowing different access privileges to the system. For example an observer will have access to different pages compared with a teacher.

About us

Observation Live has been created by System Live.

Our other services include:

- Bespoke Software Development.
 - We design and develop software to the highest quality identifying your needs and fulfilling them.
 - We develop solutions for both the web and windows.
- Planning Live - our system for Schemes of Work and Lesson Planning.
- Report Writing.
- ProMonitor Consultancy and Training.

For more information please email us at info@system-live.com or telephone us on 01253 462 352, or visit our website at www.system-live.com. We very much look forward to hearing from you!